

The Society Page

June 2013

OUR ANNUAL MEETING AT KIRIGIN CELLARS



Share lunch and wine with us on Sunday, June 23, 12:00 noon to 2:00 p.m. at Kirigin Cellars, 11550 Watsonville Road.

Lunch will be catered by David Bozzo, including wine or water for \$20 each.

Please RSVP by Tuesday, June 18th. Tell us how many will attend, include your check for \$20 each made out to Gilroy Historical Society, and send to our PO Box 1621, Gilroy, CA 95021.

Our event will be held in the shaded Courtyard just to the left of the original tasting room. Park in the gravel parking lot to the right of the driveway.

MORE ABOUT THE KIRIGIN CELLARS

The winery is on the County's list of historic resources. In 1979 the Clampers (E Clampus Vitus) placed a historic marker in front of the winery. It is hard to read, even in person, but this is the inscription:

BONESIO WINERY

THIS LAND WAS ORIGINALLY PART OF EL RANCHO SOLIS, GRANTED IN 1828. THE MAIN HOME IS ONE OF THE OLDEST WOODEN STRUCTURES IN THE COUNTY. PART OF THE PRESENT RESIDENCE DATES BACK TO 1833 AND THE REDWOOD TIMBERS WERE HAULED FROM MT. MADONNA FOR ITS CONSTRUCTION. VINEYARDS WERE IN PRODUCTION HERE PRIOR TO 1877 AND FOR THREE GENERATIONS THE BONESIO FAMILY PRODUCED WINE UNDER THE UVAS LABEL. THE WINERY WAS SOLD IN 1976.

Do you remember wine tasting with Louie himself behind the bar? In 1865 some bottles sold for \$.96 because he didn't want to bother making change for the 4 cents tax. And he had funny names for the wine like "peanut noyer" for pinot noir. Visit www.KiriginCellars.com for more information about the winery and its history under the Chargin ownership. The same winemaker, Allen Kreutzer, has been there since 1984!

AGENDA FOR OUR ANNUAL MEETING

- I. Treasurer's Report
- II. Endowment Fund progress
- III. Accomplishments for 2012-2013
- IV. Goals for the year
- V. Questions, Suggestions or Requests from members
- VI. Presentation of 2013 Architectural Awards

ENDOWMENT FUND PROGRESS

What amazing progress we have made! Thanks to our very generous donors and consistent work on fundraisers we were able to deposit \$10,600 in our Museum Endowment Fund with the Gilroy Foundation in the past year. With interest, our 2013 first quarter balance was \$101,994. We are so grateful for all your support!

Our goal of eventually reaching \$500,000 is very ambitious, but necessary. We believe it will take that much to generate enough income to pay a half-time museum professional annually. With help from the Lindeleaf Fund we can see the halfway point, a major milestone. Of course we will always need and want volunteers also..... the lifeblood of the Society.

ACCOMPLISHMENTS OF 2012-2013

1. Staffed the Gilroy Museum with volunteers on Tuesdays, Thursdays and the first Saturday of each month.
2. Led free walking tours to different historic parts of Gilroy on nine first Saturdays.
3. Sold items at both the Gilroy Museum and the Welcome Center to fund our Museum operating budget. Monthly pizza sales to bowlers also added to operating funds.
4. Held fundraisers at Mimi's Restaurant and a Bowl-a-thon at Gilroy Bowl to raise money for our Museum Endowment Fund.
5. 2012 Architectural Awards went to the Salvation Army Church, The Milias Restaurant, the Willey Cultural Center, the Arts Alliance Center, the temporary library remodel, Rossi's Drive Train, and three historic homes with beautiful maintenance.
6. Completed the 24-minute DVD video tour of the Gilroy Museum with grants from the Gilroy Foundation and the Gilroy Rotary Club and the professional expertise of 152 West filmmakers. This helps us meet our handicapped access requirements and is being used to reach out to schools and community groups. Two copies are at the Gilroy Library.

7. Earned \$883.68 helping to sell art posters at the 2012 Garlic Festival.

8. Gave a thank-you Christmas luncheon at the Willey House for our Museum volunteers and a small gift certificate at Starbucks for each.

GOALS FOR 2013-2014

A. Continue staffing the Gilroy Museum two days a week and improve our practices there.

B. Add to our Museum Endowment Fund.

C. Support preservation of historic buildings and increasing the vitality of Gilroy's historic downtown.

D. Continue our Architectural Awards program.

E. Continue our Residential Plaque program.

F. Increase visitation and access of the Gilroy Museum for school children and community members by using our new video.

G. Provide interesting quarterly programs for members.

H. Maintain and improve our website and Facebook page.

I. Raise the profile of Gilroy's rich history in ways that increase tourism and economic vitality.

NOMINEES FOR 2013 ARCHITECTURAL AWARDS

Here are some of the nominees for this year's Architectural Awards. Kris Knudsen, a professional architectural photographer, volunteered his services to take photos. You'll see all of his beautiful photos in our next issue of the Society Page along with the reason for the award.

Old Wheeler Hospital, 650 West Fifth Street

Benevolent Society House, 7429 Alexander Street

Eagleberry Tax Service, 7671 Eagleberry Street

Fifth Street Coffee Roasting Company, 7501 Monterey Street, interior

Grange Hall/Japanese School, 8191 Swanston Lane

Bella Viva Ristorante e Caffè, 7423 Monterey Street

Thayer House, 174 Martin Street

Gilroy Train Station, 7250 Monterey Street

La Aldea, 60 Fourth Street

Hoencck House, 9480 Murray Avenue

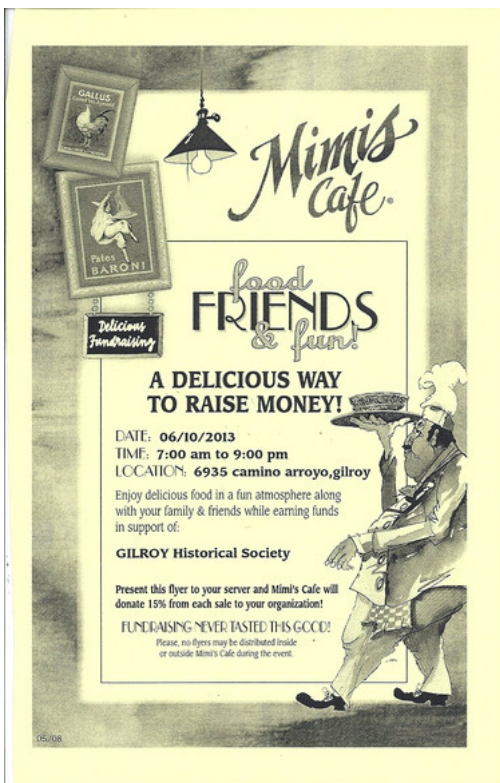
Cape Cod style home, 7790 Princevalle Street





DINE OUT FOR THE MUSEUM

Treat yourself to a meal at Mimi's Cafe on Monday, June 10th and you will be treating the Gilroy Historical Society also! Come for breakfast, lunch, or dinner and bring your friends. Mimi's will give us 15% of every check, but **only if you give the flyer printed in this newsletter to your server**. You may make copies of the flyer, pick up one at the Museum, or print one from our website or Facebook page. Just do it!



THE JUAN BAUTISTA DE ANZA TRAIL

The Community Room at our beautiful new library was the setting for a great program on the Juan Bautista de Anza Trail on April 27th. The Trail is one of 30 National Trails, administered by the National Park Service. We're fortunate to have the Trail on both sides of our valley.

De Anza brought 240 men, women and children and 1000 animals on a 1200-mile journey from Mexico to Monterey and the Bay Area in 1775-76. These people were among the first permanent settlers of Monterey and San Jose. Their incredible journey was documented in diaries by de Anza and Father Font, which you can read on www.anza.uoregon.edu.

Hale Sargent, Interpretive Ranger, explained that the National Park Service joins with owners of public property on or near the original route to mark pedestrian trails. Wouldn't it be great if Gilroy could mark our Uvas Preserve Levee as part of the de Anza Trail?

There are several ways to learn more about the Trail. This summer a large traveling exhibit will be on display at the Gilroy Library. You can check out the DVD we saw, which is an excellent dramatic re-enactment of the journey. At the Museum we sell a booklet about the journey and you can also go to the National Park website at www.nps.gov/juba/.

CAN YOU GIVE US A HAND?

It's the time of year to sign up Garlic Festival workers and **Barbara Biafore** is recruiting! We hope to return to our easy jobs in the shade of the Mercantile Tent, helping to sell art posters from past years. It is fun to help guests choose posters and there are even a couple chairs to sit on during slow periods. Call Barbara at 408-842-7515 if you can take a shift!

MUSEUM NEWS

Welcome to the Museum's two great new volunteers, **Jack Sturla** and **Nancy Alford**. Jack's knowledge of Gilroy history is encyclopedic and he is a great storyteller too! Nancy retired from the San Jose City Clerk's office and has a multitude of skills to share with us. Unfortunately **Betty Kelly** had to have more hip surgery and her recovery is slower than expected. We miss her as

the cheerful, dependable Lead Volunteer on Tuesdays and are hopeful she can return in the future. In the meantime both **CaroldeSantos** and **Bill Faus** have been subbing for Betty.

Recently the Museum has received the following donations:

Correspondence between Herbert Robinson and Ada O. Viall regarding the donation of Caroline Hoxett's house to the Gilroy Women's Civic Club, and digital copies of a notebook of recollections of Caroline Hoxett's 49'er experiences written by her daughter, Ada O. Viall. Donated by Caroline Monzani, great-great-granddaughter of Caroline Hoxett.

A book titled "Letters to California (1854-1891); letters to Samuel M. Ousley, his wife Electa Rockwell Ouseley, and their children during the period 1854-1891 in California." Donated by **Barbara Armenta**.

An Abstract of Title to Parts of the Ranchos "San Francisco de Las Llagas" and "La Polka" 1892. Donated by Diane Robinson.

A Citizen's Indefinite Leave card from World War II issued by the U.S. War Relocation Authority to Fusako Ishizuka so she could work outside of the Relocation Camp where she was imprisoned. Donated by Arlene Osato.

A large copper container used by Dr. Elmer Chesbro as an x-ray developing vat. Donated by **Elizabeth Barratt**.

Various photographs, recordings and records from Christopher Ranch, the construction of the Sunsweet plant on Leavesley, the construction of Gilroy Foods, etc., miscellaneous local shots. Donors were Pat DeStasio as agent of Christopher Ranch, Inc., **PhillLaursen** as agent for several persons, **Lenore Hailstone**, **Linda White**, Applebee's Restaurant, and **Beth Wyman**.

[Home](#) | [Contact](#) | [Calendar](#) | [Store](#) | [The Society Page Archives](#) | [Join](#) | [Volunteer](#)

Create a website with SnapPages